



التكنولوجيا الأمانة للتجارة

لأنظمة الأمن والسلامة

SAFETY & SECURITY SYSTEMS

[www.safetechsa.com](http://www.safetechsa.com)

# Activities of Safetech In Projects

توريد المواد .

نظام الإنذار المبكر عن الحريق ونظام الحماية .

نظام مكافحة الحريق .

أنظمة الأمن والتحكم بدخول المنشآت و المباني .

أنظمة النداء ونظام الدوائر التلفزيونية المغلقة .

التجهيزات والمواد الكهربائية والإلكترونية.

المولدات الكهربائية.

نظام الكشف عن تسرب الغاز والمياه .

الأشغال الميكانيكية للبناء والمرافق العامة

Material Supply

Fire Detection & Protection System.

Fire Fighting System.

Access Control & Premises Security Systems.

Public Address & CCTV System

Electrical and Electronic Component.

Generators.

Gas and Water Leak Detection System.

Mechanical Works for Building and Public Facilities



# Intruduction

**SAFE TECH EST.** Founded in the year of 2010, Safe Tech Est. is a company of fire safety and security system. It recognized as a leading fire protection and emergency systems company, providing a wide range of service with fully qualified and independently licensed team of fire technicians to the kingdom of Saudi Arabia

We did the various projects executed by Safe Tech Est. In both the private and government sectors throughout the Nation. These projects include residential buildings, commercial construction for example (schools, institute, hospitals, malls, sports stadiums, etc.), industrial manufacturing plants, power generation stations, and oil and gas facilities. As we are providing a total fire protection systems. Safe Tech Est. undertakes turnkey projects from design, supply, installation, testing and commissioning of various systems like fire detection, fire alarm, fire suppression, and fire fighting systems which our customers find it very convenient to have all their system requirements provided by Safe Tech Est.

The mission of Safe Tech Est. is to authorize customer to secure business, property and there life's by providing high excellence of quality and advanced fire protection system and using the knowledge of world rank manufacturing processes through best engineering procedure and expand it to kingdom of Saudi Arabia

We will focus on our aim into market sectors that we serve best in **"fire safety and security system"** and in doing so bring added values to our customers by providing them an **"superior Quality and Timely Service at a reasonable Price"**.

تأسست **مؤسسة التكنولوجيا الأمنة** في عام 2010 وهي مؤسسة تعمل في مجال الأمن والسلامة من الحريق حيث توفر مجموعة واسعة من الخدمات بواسطة فريق مؤهل و معتمد من الجهات المختصة من مهندسين وتقنيين وفنيين في جميع أنحاء المملكة العربية السعودية.

لقد نفذت مؤسسة التكنولوجيا الأمنة مجموعة من المشاريع في القطاعين الحكومي والخاص على حد سواء في جميع أنحاء المملكة العربية السعودية. حيث تم تنفيذ هذه المشاريع في المباني السكنية والتجارية كالمدارس والمعاهد والمستشفيات ومراكز التسوق و الملاعب الرياضية... الخ كما امتدت مشاريعنا للمنشآت الصناعية كمحطات توليد الطاقة الكهربائية ومنشآت النفط والغاز والمصانع. كما نقوم بتوفير مجموعة الحماية من الحريق لمشاريعنا المنفذة بأقصى معايير الجودة من خلال أفضل الإجراءات الهندسية والتقنية وذلك ابتداء من اختيار المواد مروراً بالتصميم والتثبيت والمعايرة وانتهاءً بالإختبار والتدقيق لمختلف أنواع النظم مثل نظام الكشف والحماية من الحريق ونظام إنذار الحريق ونظام مكافحة الحريق . وما يجدر ذكره أن جميع عملاءنا مسرورين للتعامل معنا وذلك مما توفره مؤسسة التكنولوجيا الأمنة من متطلبات ومعايير عالية في جميع الأنظمة.

مهمتنا تأمين منشآت عملاءنا وحياتهم من خلال توفير تميز عال في الجودة ونظم متطورة للوقاية من الحريق واستخدام المعرفة في عمليات التصنيع والتثبيت من خلال أفضل الإجراءات الهندسية ليمتد ويشمل جميع مناطق المملكة العربية السعودية.

هدفنا خدمة عملاءنا في جميع قطاعات سوق العمل وتقديم الجودة العالية لأنظمة الأمن والسلامة من جميع أنحاء العالم وصقلها بالعمل الهندسي المتميز في وقت مناسب وبقيمة تنافسية.

بِسْمِ اللَّهِ الرَّحْمَنِ الرَّحِيمِ


**المملكة العربية السعودية**  
 وزارة الداخلية  
 المديرية العامة للدفاع المدني

الإدارة العامة للدفاع المدني بمدينة الرياض  
إدارة السلامة بمدينة الرياض

الرقم : .....  
التاريخ : ٧٥٠/د  
المشروعات : ٣٠/١/٤٣٨٥١

**تصريح مزاولة النشاط الآتي:**

التصنيف	نوع النشاط	١-
فئة ( د )	تركيب وصيانة أنظمة الإطفاء	
فئة ( ج )	تركيب وصيانة أنظمة الإنذار	
-----		
مؤسسة التكنولوجيا الآمنة للتجارة	اسم الشركة / المؤسسة	٢-
المقر	الموقع	٣-
٤٧٢٦٤٢٢	الهاتف	

أسماء المهندسين المعتمدين :-

١- احمد محمد نور احمد  
٢- سيضيق آل اكبر مانقلته

١- مهندس كهربائي  
٢- مهندس ميكانيكي

٤- ملاحظات :-

- هذا التصريح ساري المفعول لمدة ستة شهور فقط .
- في حال وجود أي ملاحظات على (المؤسسة/الشركة) يتم اشعار ادارة السلامة بالادارة العامة للدفاع المدني بمدينة الرياض على الفاكس (٤٦٤٧٣٥).
- هذا التصريح يتم تصاريح الدفاع المدني بالرياض فقط .

الحرم

مدير إدارة السلامة بمدينة الرياض  
عقيد  
سليمان عبدالعزيز المبيريك

فئة التصنيف	نظام الإطفاء	نظام الإنذار	فئة التصنيف	نظام الإنذار
حجم المشروع المسموح به	حجم المشروع المسموح به	حجم المشروع المسموح به	حجم المشروع المسموح به	حجم المشروع المسموح به
ان لا تزيد السعة المسموعة بقرت ثلاث من ٢٠٠٠ م <sup>٢</sup> + خرطوم الإطفاء + فوهات حافة	ان لا تزيد السعة المسموعة بقرت ثلاث من ٦٠٠ م <sup>٢</sup> + جميع أنظمة مكافحة الأخرى	ان لا تزيد السعة المسموعة بقرت ثلاث من ٦٠٠ م <sup>٢</sup> + جميع أنظمة مكافحة الأخرى	ان لا تزيد السعة المسموعة بقرت ثلاث من ٦٠٠ م <sup>٢</sup> + جميع أنظمة مكافحة الأخرى	ان لا تزيد السعة المسموعة بقرت ثلاث من ٦٠٠ م <sup>٢</sup> + جميع أنظمة مكافحة الأخرى
نظام يدوي + نظام تلقائي على ان لا تزيد مناطق الحريق عن خمس مناطق او عدد ثلاث دوائر تشغيلية (Analog circuit)	نظام يدوي + نظام تلقائي على ان لا تزيد مناطق الحريق عن حدة مناطق او عدد ستة دوائر تشغيلية (Analog circuit)	نظام يدوي + نظام تلقائي على ان لا تزيد مناطق الحريق عن حدة مناطق او عدد ستة دوائر تشغيلية (Analog circuit)	نظام يدوي + نظام تلقائي على ان لا تزيد مناطق الحريق عن حدة مناطق او عدد ستة دوائر تشغيلية (Analog circuit)	نظام يدوي + نظام تلقائي على ان لا تزيد مناطق الحريق عن حدة مناطق او عدد ستة دوائر تشغيلية (Analog circuit)
جميع انواع أنظمة	جميع انواع أنظمة	جميع انواع أنظمة	جميع انواع أنظمة	جميع انواع أنظمة

برقياً الدفاع المدني ص.ب ١١١٧٤ الرياض فاكس ملي (٤٩٢٥٠٤١) موقع الدفاع المدني على الانترنت WWW.998.GOV.SA

# Index



Fire Alarm System



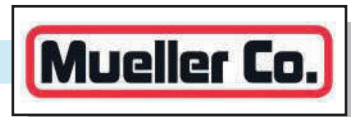
Fire Alarm System



Cables



Gate Valves



Fm 200 Extinguishing System



Batteries



kitchen Hood System



Pumpset



Fire Fighting Equipment



Fire Extinguisher



CCTV Camera System



CCTV Camera System

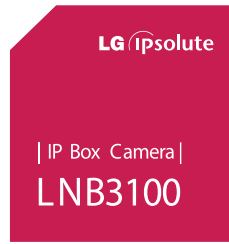
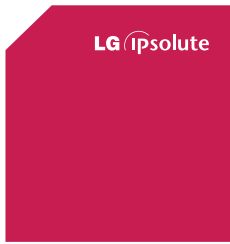




# LG SECURITY SYSTEM



## 1.3 Megapixel IP Box Camera



| IP Box Camera |  
**LNB3100**



### FEATURE S

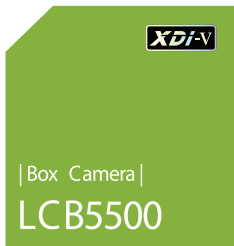
- 6.08 mm (1/3 type) CMOS
- 30 fps @ 1,280 x 1,024
- Min. Illumination
  - Color : 0.3 Lux @ F1.2
  - B/W : 0.005 Lux @ F1.2
- H.264 (High Profile Supported) / MJPEG
- 80dB of Wide Dynamic Detection
- ICR Day & Night • 2D + 3D DNR
- Dynamic Profile (Up to 7)
- Region Of Interest Streaming
- Video Analytics Embedded
- LG ipsolute VMS, Mobile App
- Micro SD Slot • Alarm In / Out
- Audio In / Out • PoE / DC12V
- 68.4(W) x 61.5(H) x 131.5(D) mm
- 365 g



### FEATURE S

- 6.08 mm (1/3 type) CMOS
- 30 fps @ 1,280 x 1,024
- Min. Illumination
  - Color : 0.3 Lux @ F1.2
  - B/W : 0.3 Lux @ F1.2
- H.264 (High Profile Supported) / MJPEG
- 80dB of Wide Dynamic Detection
- Digital Day & Night
- 2D + 3D DNR
- Dynamic Profile (Up to 7)
- Region Of Interest Streaming
- LG ipsolute VMS, Mobile App
- Micro SD Slot
- PoE / DC12V
- 68.4(W) x 61.5(H) x 131.5(D) mm
- 357 g

## ANALOG CAMERA



## 6mm CCD High Resolution Box Camera

700 TVL(B/W), WD R, ICR Day & Night



## 6mm CCD High Resolution Box Camera

700 TVL(B/W), ICR Day & Night



### FEATURE S

- 6 mm (1/3 Type) Super HAD CCD II
- 520k / 610k Pixels (NTSC / PAL)
- 650TVL @ Color / 700TVL @ B/W
- Minimum Illumination :
  - Color : 0.0001 Lux @ Sens-up x512, F1.2
  - B/W : 0.00001 Lux @ Sens-up x512, F1.2
- 2D + 3D DNR
- WDR
- ICR Day & Night
- 14 Privacy Zone Masking
- Motion Detection (8 Zones)
- RS-485, Coaxial Communication
- DC 12V / AC 24V
- 64(W) x 54(H) x 121.5(D) mm
- 360 g

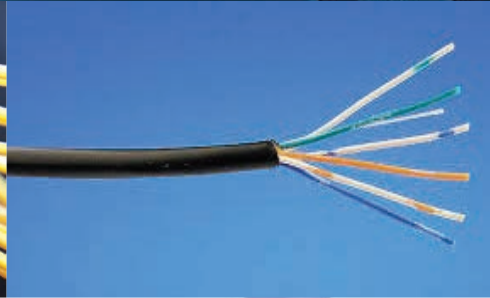
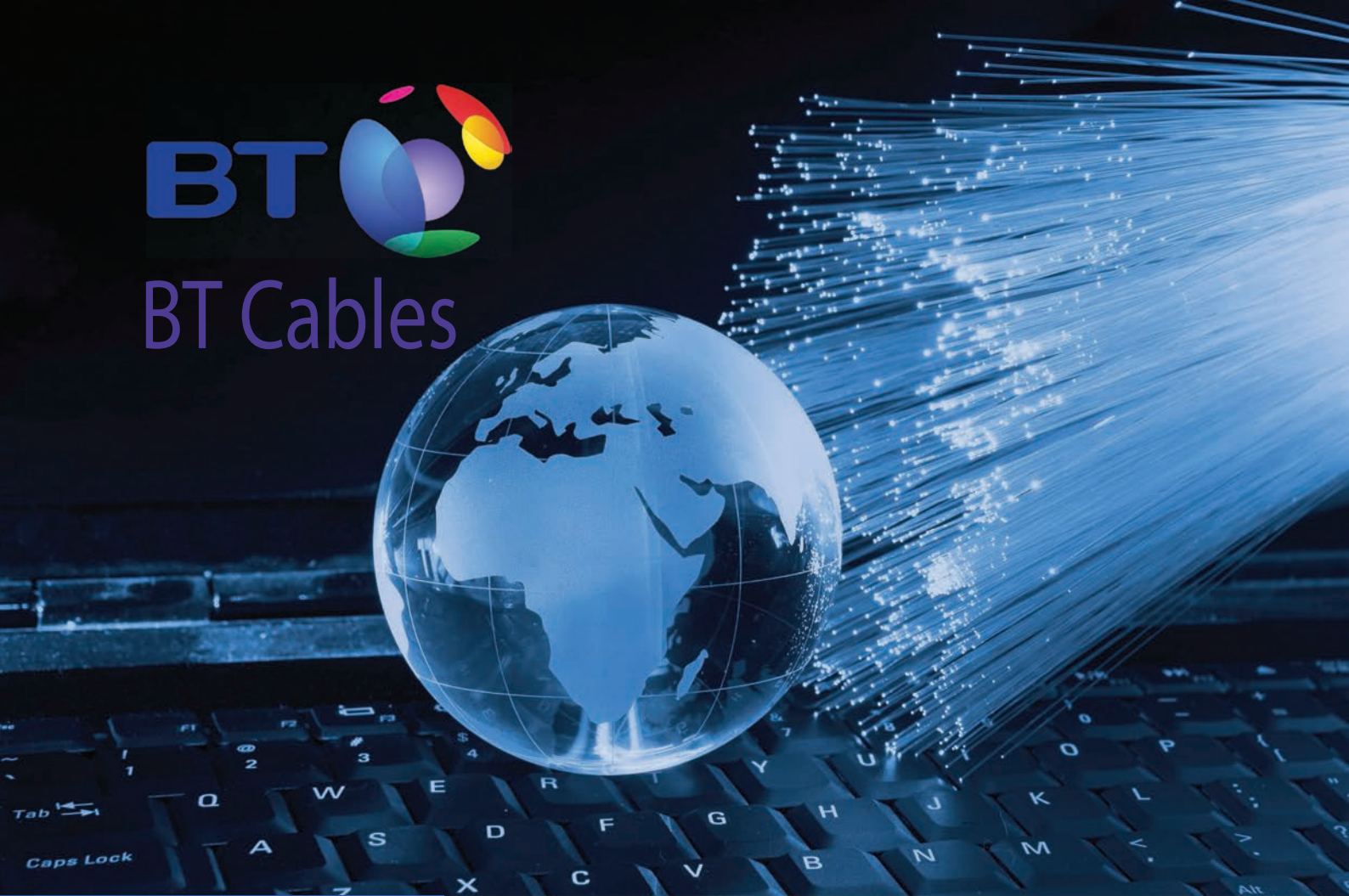


### FEATURE S

- 6 mm (1/3 Type) Exview HAD CCD II
- 520k / 610k Pixels (NTSC / PAL)
- 650TVL @ Color / 700TVL @ B/W
- Minimum Illumination :
  - Color : 0.0001 Lux @ Sens-up x512, F1.2
  - B/W : 0.000001 Lux @ Sens-up x512, F1.2
- 2D + 3D DNR
- ICR Day & Night
- 14 Privacy Zone Masking
- Motion Detection (8 Zones)
- RS-485, Coaxial Communication
- DC 12V / AC 24V
- 64(W) x 54(H) x 121.5(D) mm
- 360 g



BT Cables







**Belden**

INDUSTRIAL  
RESIDENTIAL  
BROADCAST  
NETWORKING  
SOUND, SECURITY & ALARM  
ELECTRONIC WIRE & CABLE  
FIBER OPTIC CABLE



# NP Baureihe – Series

Ventilgesteuerte Bleiakumulatoren  
*Valve Regulated Lead-Acid Batteries*

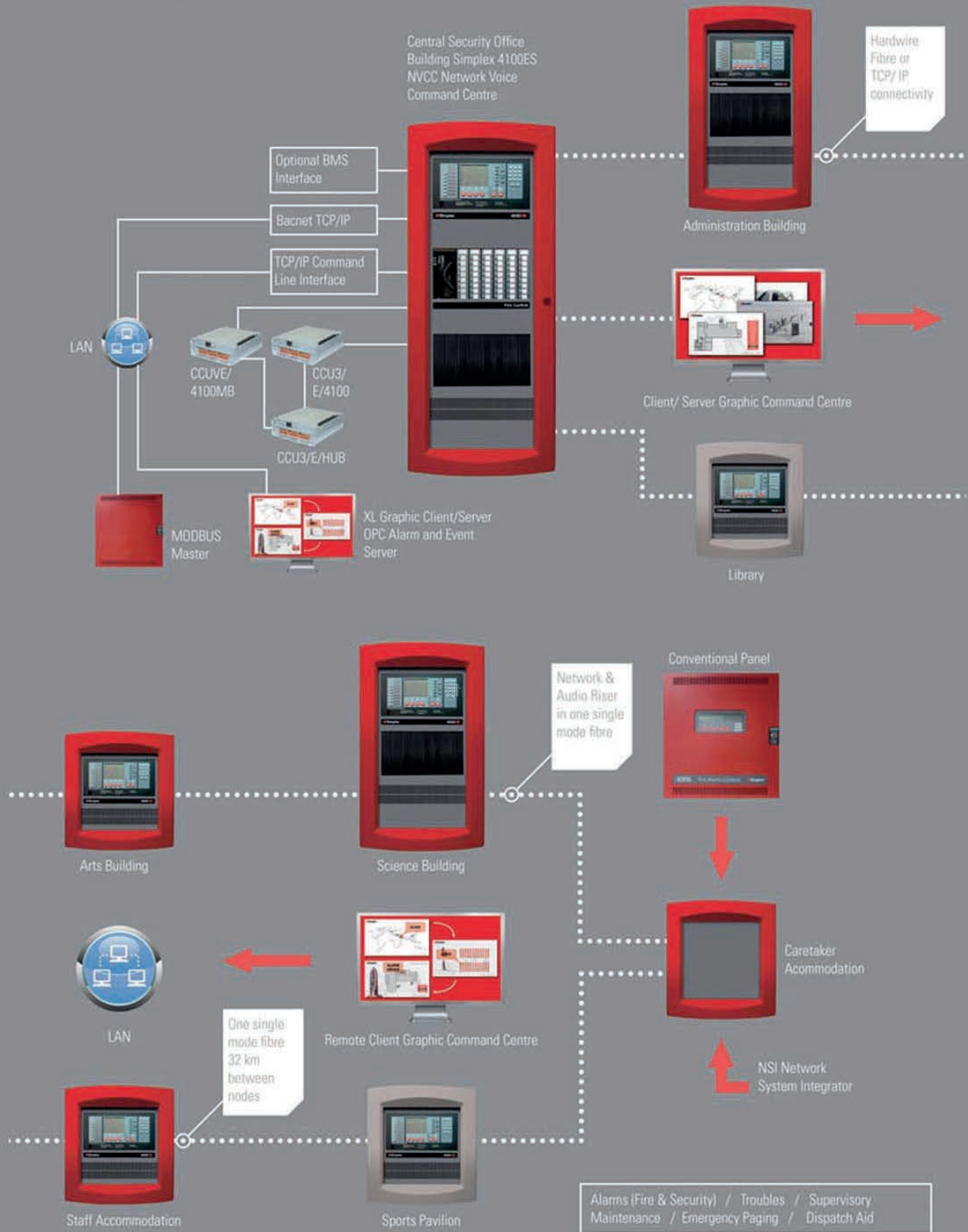


**YUASA BATTERY (EUROPE) GmbH**

# YUASA



# Campus Style Network Multiple Connectivity Options



### Features

#### Basic System includes:

- Capacity for up to 1000 addressable devices, up to 127 VESDA SLI points, up to 2000 points of Annunciation and up to 20 internal and external card addresses
- Color-coded operator interface with membrane keypad includes 2 x 40 Super-twist LCD display, 3 programmable control keys and 6 programmable LEDs
- CPU assembly includes dedicated compact flash memory for on-site system information storage and convenient Ethernet service port access
- 8 Amp power supply with up to 2 Amps of Auxiliary power and battery charger capacity for up to 110 Ah batteries (UL) or up to 50 Ah batteries (ULC) (33 Ah max in single bay control cabinet, 50 Ah max with 4100-0650 battery shelf in two bay control cabinet)
- 4 on-board Class A or B 3 Amp NACs and one programmable auxiliary relay output rated for 2 Amps @ 32 VDC
- Class A or B Two-loop Isolated IDNet™ Communications (IDNet+) supports up to 248 addressable and analog sensing devices on non-twisted, non-shielded wiring
- Remote annunciator module support via RUI (remote unit interface) communications port, either Class B (Style 4) or Class X (Style 7) Pathway operation
- 48 LED panel mount annunciation provides 40 Red and 8 Yellow pluggable LEDs (select models), optional LED kits are available for custom LED configurations
- Available with InfoAlarm™ Command Center expanded content user interface (two bay cabinet required)

#### Optional MSS and Door Mount Modules include:

- City Connect (with or without disconnect switches), Alarm Relay Module

#### Optional Block Space Modules include:

- Fire Alarm Network Interface Card for 4120/4100 Peer-to-Peer network communications, supports either Class B or Class X (Style 7) Pathway operation
- Ethernet connectivity options include Building Network Interface Module (BNIC) and SafeLINC Internet Interface
- Dual RS-232 Module (for printer, PC annunciator or third party interface)
- VESDA® Air Aspiration High Level Interface
- Serial DACT
- 8 Zone IDC Modules Class A or B
- 4 Point Auxiliary Relay Module
- Physical Bridge Network Modules
- Additional IDNet+ and MX Loop addressable device modules



4010ES Fire Alarm Control Panel  
with or without LED Annunciation

#### Compatible with Simplex® remotely located:

- 4003EC Small Voice Panels
- 4009 IDNet NAC Extenders
- 4009 TrueAlert Addressable Controllers and TrueAlert Power Supplies (TPS)
- 4081 110Ah Battery Chargers
- 4100-7400 Series Graphic Annunciators
- 4190 PC Annunciator
- 4190 Fiber Modems and Physical Bridges
- 4606-9102 Remote LCD Annunciator and 4100-9400 Series Remote InfoAlarm Command Centers
- IP communicator compatibility

#### 4010ES Agency Listing:

- UL Std. 864, Fire Detection and Control (UOJZ), and Smoke Control Service (UUKL)
- UL Std. 2017, Process Management Equipment (QVAX)
- UL Std. 1076, Proprietary Alarm Units-Burglar (APOU)
- UL Std. 1730, Smoke Detector Monitor (UULH)
- ULC Std. S527-99



ANALOGUE FIRE DETECTION  
VIGILON CONTROL PANEL

A one to four loop panel accommodating up to 200 devices per loop. Up to 31 panels may be connected in a secure network.

LCD display allows clear indication of fire or fault location.

Site specific fire plans can be programmed to meet the evacuation needs of the building.



Vigilon Control Panel

Technical Specification

Type	Control panel
Max No of Loops	4
Loop Capacity	200
Batteries	4 x 12V @ 12AH
Battery Standby	24 hours standby + 30 minutes alarm upgradeable to 72 hours
Approx Weight	16.2 Kg
Ambient Temperature	0°C to 45°C
Relevant Standard	BS 5839: Part 4 + EN54 Part 2 + 4
Cable Entry	Top and rear knockins
Approvals	LPC approval to BS 5839: Part 4

ORDER CODES

EN 54 Control Panels  
(For BS 5839 versions add the  
suffix -V+3 e.g. VIG-1NET-V+3)

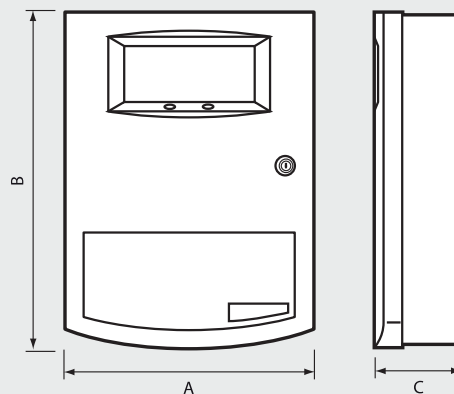
- 1 Loop VIG1
- 2 Loop VIG2
- 3 Loop VIG3
- 4 Loop VIG4
- 1 Loop, Networkable VIG-1NET
- 2 Loop, Networkable VIG-2NET
- 3 Loop, Networkable VIG-3NET
- 4 Loop, Networkable VIG-4NET

Note: Control panels require a  
first fix, VIG1-ST-FIX



	A	B	C
Control Panel	408	539	151
Battery Box	382	309	112

Dimensions (mm)



# Xenex control panel

The Xenex panel complies fully with the European standard EN 54 Parts 4 & 2 and can be used on installations meeting BS 1-5839.

Each panel contains its own integral power supply and battery support for up to eight alarm sounder circuits, two auxiliary relay contacts, a zone disablement facility and a one man test and commission facility, all simplifying system design, installation and commissioning.



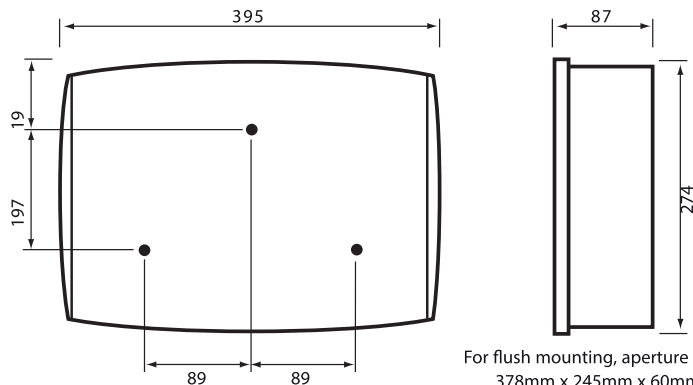
Xenex Control Panel

TECHNICAL SPECIFICATION					
No. of Zones	8*1	2	4	8	Zone Repeat
Maximum Load per Zone	3mA	3mA	3mA	3mA	N/A
No. of Sounder Circuits	2	2	4	8	N/A
Max. Sounder Circuit Load	0.5A per circuit Total load not to exceed 1A				N/A
Batteries (seperate)	2 x 12V, 2.1 Ah		2 x 12V, 2.8 Ah		2 x 12V, 2.1 Ah
Battery Standby	72 hours plus 0.5 hours alarm load				72 hours
Aux. Relay Contacts	1 N/O and 1 N/C pair, 1A at 24V				N/A
Approx Weight (with batteries)	5.8 Kg	5.8 Kg	5.8 Kg	6.2 Kg	5.8 Kg
Relevant Standard	EN 54 Parts 2 & 4				
Approvals	LPCB approved to EN54: Parts 2 & 4				
Cable Entry	13 Top and 13 Rear				
Cable Type	BS 6387, 2 core, min 1.5mm <sup>2</sup> CSA				
Class Change Facility	Via normally open push button switch located no more than 100m from panel				N/A
Operating Temperature	Indoor, 0 - 40°C				

Note: Maximum of 8,1 zone repeat panel per system.

Note: For maximum system loading table see page 20.

Dimensions of all panels (inc Repeat panel) (mm)

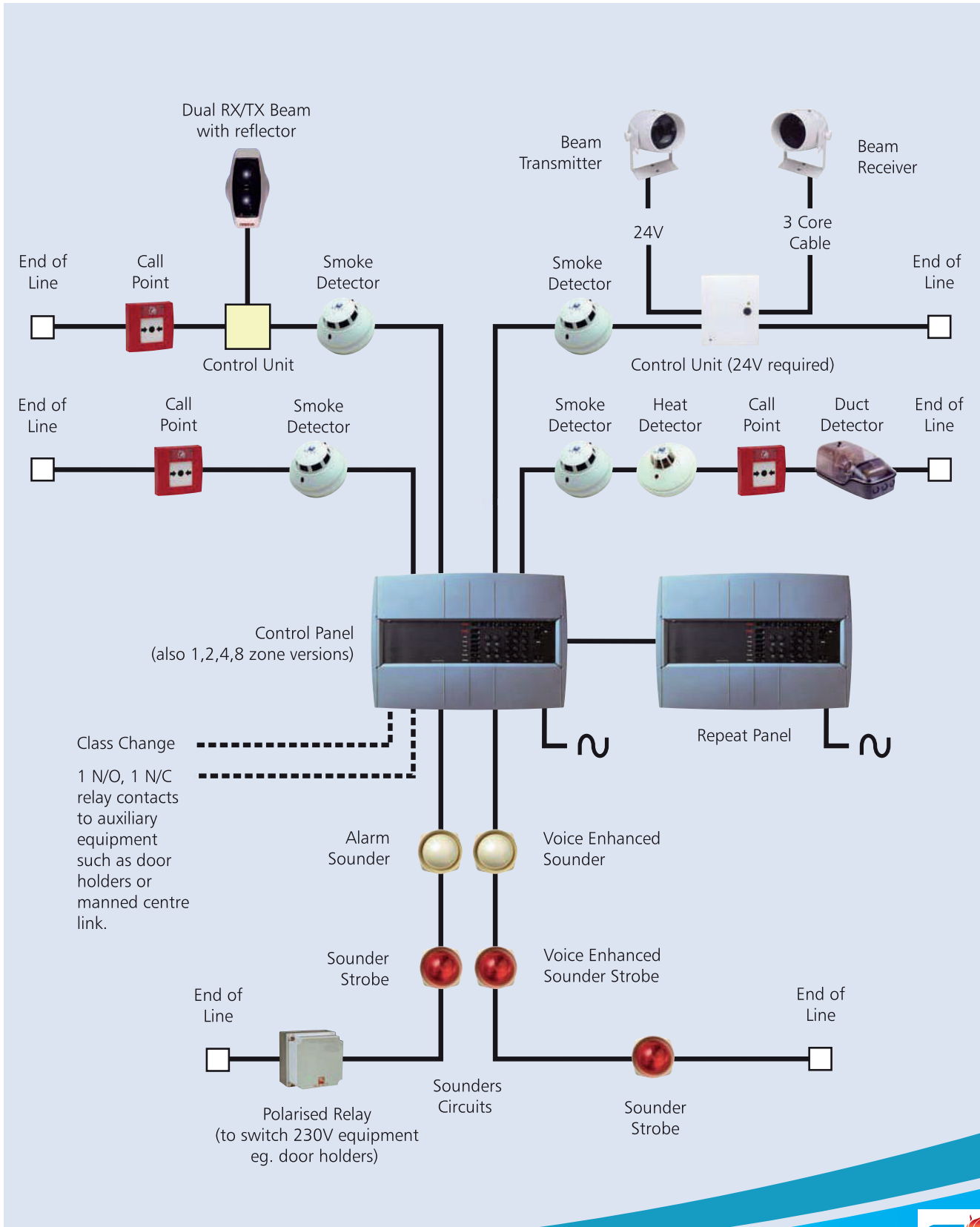


### ORDER CODES

1 Zone	01-13270LB
2 Zone	02-13270LB
4 Zone	04-13270LB
8 Zone	08-13270LB
8 Zone Repeat	
Panel	08-13271LB
Flush Surround	29-13270LB

(Batteries to be ordered seperatly)

# Xenex system architecture



## Tyco MX Technology

*Tyco MX Technology* brings together the latest fire detection technology from around the world into a comprehensive international range of fire detection systems. *Tyco MX Technology* can be used to provide cost effective solutions on small fire detection systems whilst also providing the features and functions required on very large commercial and industrial sites.

### Features

- *MX VIRTUAL* multi-sensor detectors
- *MX DIGITAL* robust & reliable high speed loop protocol
- Rapid response to fire conditions and very low false alarms through:
  - *MX FASTLOGIC* detection algorithms
  - *MX HPO* detection algorithms
  - *MX CCO* fire detection



### MX Technology

*Tyco MX Technology* is being made available on a wide range of internationally approved panels and systems available from Tyco companies world-wide including:

- *MINERVA MX PANELS*
- *MINERVA MARINE T2000 PANELS*
- *ZETTLER EXPERT PANELS*
- *MINERVA SOLO PANELS*





## MX Detection Panels

Tyco MX detection panels use all the features of Tyco MX Technology to provide the latest fire detection technology meeting the latest worldwide standards in cost-effective, expandable packages.



### *Tyco MX detection panel*

- MX VIRTUAL Multi-sensor detectors
- MX DIGITAL high speed reliable digital protocol
- MX FASTLOGIC fuzzy logic smoke detection algorithms
- MX CCO universal carbon monoxide fire detection algorithms

### *Tyco MX detection panels provide modular cost effective solutions:*

- Networked panels from 1 to 792 detection loops
- Powerful central loop processing functions
- Powerful and modular user interface
- MX REMOTE diagnostics and service functions
- MX GRAPH graphical user interfaces
- Designer and modular housing options

Tyco MX detection panels provide long term fire detection solutions including upgrade paths from earlier panel models and a long term development strategy providing future upgrade paths.

### *Tyco MX detection panels include:*

- MINERVA MX for EN54 LPCB approved systems
- ZETTLER EXPERT for EN54 LPCB & VdS approved systems
- MINERVA EXPERT T2000 for Marine approved systems

### *Tyco MX detection panels include a powerful user interface:*

- 640 Character display
- Displays first alarm and most recent alarm
- Permanently displays systems status including number of alarms, number of faults, number of isolated points
- Scroll function allows details of all events and status to be easily viewed
- Displays temperature, CO level and smoke level at point in alarm

procedures

for emergency

### *Tyco MX panels include advanced manager and engineer functions including:*

- Menu driven
- Multi-level password protected
- Viewing 3000 event log
- Detailed fault reporting
- Isolate by point, zone or sector
- Viewing and printing status
- Viewing and printing isolated points
- Manual and automatic walk test and reporting functions
- Viewing and printing maintenance reports
- Extensive diagnostic functions including simulation and force outputs
- Text and configuration changes/Automatic battery test
- Detector service functions

### *Tyco MX detection panels include very powerful event/action programming including:*

- Seamless network wide event/action
- 240 x 240 Output map and output sequencing algorithms
- Over 1500 event/action groups for the most complex applications
- Templates for fast programming of standard applications including:
  - EN54/BS5839
  - EN54/VdS
  - EN54 Marine
- User defined templates
- Time, date and special day programming
- Wide range of co-occurrence, double knock and delay functions

**QUICK RESPONSE  
AUTOMATIC SPRINKLERS  
GL SERIES  
UPRIGHT • PENDENT  
VERTICAL SIDEWALL  
HORIZONTAL SIDEWALL  
CONVENTIONAL (OLD STYLE)**



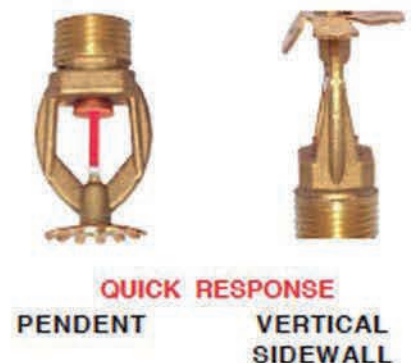
**DESCRIPTION AND OPERATION**

The Globe Quick Response GL Series Sprinklers are a low profile yet durable design which utilizes a 3mm frangible glass ampule as the thermosensitive element. This provides sprinkler operation approximately six times faster than ordinary sprinklers. While the Quick Response Sprinkler provides an aesthetically pleasing appearance, it can be installed wherever standard spray sprinklers are specified when allowed by the applicable standards. It offers the additional feature of greatly increased safety to life and is available in various styles, orifices, temperature ratings and finishes to meet many varying design requirements. Quick Response Sprinklers should be used advisedly and under the direction of approving authorities having jurisdiction.

The heart of Globe's GL Series sprinkler proven actuating assembly is a hermetically sealed frangible glass ampule that contains a precisely measured amount of fluid. When heat is absorbed, the liquid within the bulb expands increasing the internal pressure. At the prescribed temperature the internal pressure within the ampule exceeds the strength of the glass causing the glass to shatter. This results in water discharge which is distributed in an approved pattern depending upon the deflector style used.

**TECHNICAL DATA**

- See reverse side for Approvals and Specifications.
- Temperature Ratings - 135°F (57°C), 155°F (68°C), 175°F (79°C), 200°F (93°C), 286°F (141°C)
- Water Working Pressure Rating - 175 psi (12 Bars)
- Factory tested hydrostatically to 500 psi (34 Bars)
- Maximum low temperature glass bulb rating is -67°F (-55°C)
- Frame - bronze • Deflector - brass • Screw - brass
- Bulb seat - copper • Spring - nickel alloy • Seal - teflon



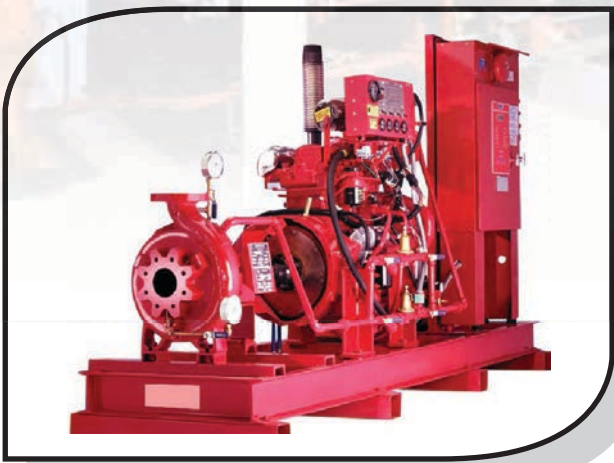
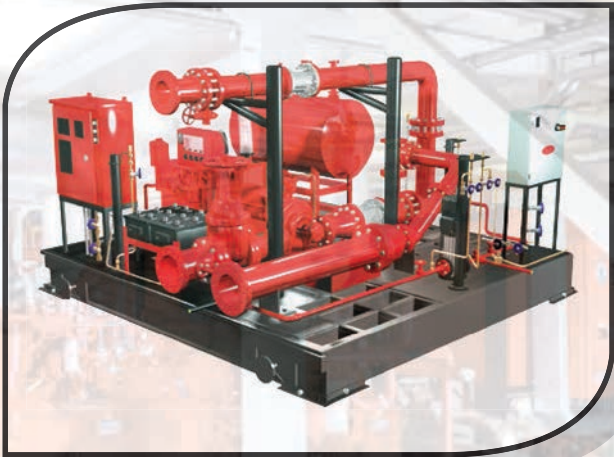




gh



# FIRE FIGHTING PUMP SETS





# Choosing Fire Extinguishers

## Identify the type of materials in the area

- Class A :** SOLIDS such as paper, wood, plastic etc
- Class B :** FLAMMABLE LIQUIDS such as paraffin, petrol, oil etc
- Class C :** FLAMMABLE GASES such as propane, butane, methane etc
- Class D :** METALS such as aluminium , magnesium , titanium etc
- Class E :** Fires involving ELECTRICAL APPARATUS
- Class F :** Cooking OIL & FAT etc

## Types of fire extinguisher

### Water fire extinguishers :

The cheapest and most widely used **Fire extinguishers**. Used for class A fires. Not suitable For Class B (Liquid) fires, or where electricity is involved.



### Foam Fire extinguishers :

More expensive than water, but more versatile. Used for Classes A & B fires. Foam spray Extinguishers are not recommended for fires involving electricity, but are safer than water If inadvertently sprayed into live electrical apparatus.

### Dry powder fire extinguishers :

Often termed the 'multi-purpose' extinguisher, as it can be used on classes A, B & C fires. Best for running liquid fires (Classes B). Will efficiently extinguish Class C gas fires, BUTBEWARE, IT CAN BE DANGEROUS TO EXTINGUISH A GAS FIRE WITHOUT FIRST ISOLATING THE GAS SUPPLY. Special powders are available for class D metal fires.

**Warning: When used indoors, powder can obscure vision or damage goods and machinery. It is also very messy.**



### CO2 fire extinguishers:

Carbon dioxide is ideal for fires involving electrical apparatus, and will also extinguish class B Liquid fires, but has NO POST FIRE SECURITY and the fire could re-ignite

### Wet Chemical

Specialist extinguisher for class F fires

**For metal fires:** A specialist fire extinguisher for use on Class D fires – metal fires such as sodium, Lithium, Manganese and aluminium when in the form of swarf or turnings.

### Colour coding

Prior to 1st jan 1997, the code of practice for fire extinguishers in the UK was BS 5423, Which advised the colour coding of fire extinguishers as follows :

**Water – Red**

**Foam – Cream**

**Dry Powder – Blue      Carbon dioxide (CO2) – Black**

**Halon – green** (now 'illegal' except for few exceptions such as the police, armed services and Aircraft)

New extinguishers should conform to BS EN 3, which requires that the entire body of the extinguisher be coloured red. A zone of colour of up to 5% of the external area can be used to identify the contents using the old colour coding shown above.

PORTABLE  
EXTINGUISHERS

# Fire Hose Cabinets



## Fire Hose cabinets - VH 600S

Manufactured in accordance with highest technical and international standards. Such products can be used different industrial & power plants, residential, commercial buildings, hospitals and schools that require protection from class A & B fires.

## Fire Hose cabinets - VH 600

Manufactured in accordance with highest technical standards and international qualification. Such products can be used different industrial & power plants, residential, commercial hospital building and other installation that require protection from class A & B fires.



## Foam Cabinets - VH 9000

Volcano foam - water cabinets Model VH-9000 are characterized by its performance for attacking class A&B fires, Effectively used gas stations, petrochemical plants, industrial premises, warehouses, car parking, paint factories and any situations requiring foam protection.





- Pre-engineered and pre-installed from factory
- Globally cost efficient and totally respectful of the products
- Available for hoods, ventilated ceilings and front cooking solutions
- Low pH Agent and proven design
- Aesthetically pleasing
- UL Listed (complying with UL 300)
- ULC Listed (complying with ULC/ORD-C1254.6)
- Complying with NFPA\* 17A, NFPA\* 96, LPCB LPS 1223 and CE Marked

In today's commercial kitchens, higher temperature cooking oils and high efficiency appliances (with a slow cooling down) such as deep-fat fryers have combined to make fire suppression more challenging than in past years. All the more challenging so the risk clearly identified concerning the deep fat fryers is associated to one less known: there are more kitchen fires starting from stoves or ranges, which are not equipped with heat safety switches contrarily to fryers. All the more challenging so the cooking fires natural behaviour is to spread the all building throughout the kitchen exhaust ductwork. The need to protect people and property from fire is crucial.

Halton's selected Ansul ° R102™ fire suppression system. It is an automatic, pre-engineered system, designed specifically for professional kitchens to protect the ventilation systems associated with cooking equipment.

Its heart lies in its ability to quickly detect and suppress fires. Ansul ° R102™ uses an advanced extinguishing agent to ensure rapid flame knock-down and vapour securement.

The integration by Halton of Ansul ° R102™ system in Halton's products provides a cost efficient global solution, from the design of the ventilation systems to the fire suppression system. The factory pre-installation is a guarantee of efficiency and respect of both products.





## Fire Protection for Restaurants and Hospitality

Cafes and cafeterias. Delis and diners. Fast food chains and food courts. ANSUL fire suppression systems and portable extinguishers protect more types of cooking equipment for more customers than any other brand. Our passion for protection is what fuels product innovation and application methods to protect your valued employees, customers and livelihood.



Knock down kitchen fires fast

The ANSUL R102- system incorporates flexible design with an extremely effective ANSULEX Low pH Liquid Fire Suppressant to quickly knock down flames, cool hot surfaces and generate a tough vapor-sealing blanket. With Appliance-Specific and Overlapping design options, the R102- system is designed to detect and suppress fire in various types of cooking and ventilating equipment such as fryers, griddles, range tops, broilers, char-broilers, woks, hoods, ducts, plenums, filters and grease extraction devices.



Attack fires with the exclusive fire suppression hybrid

The PIRANHA fire suppression system employs the best firefighting attributes of two agents. The system attacks fire using the knockdown and securing capabilities of PRX Liquid Fire Suppressant. Water follows, quickly cooling the cooking media and further helping to prevent reflash. This automatic, pre-engineered, fixed system is designed to detect and suppress fire in various types of cooking and ventilating equipment such as fryers, griddles, range tops, broilers, char-broilers, woks, hoods, ducts, plenums, filters and grease extraction devices.



## R102- Fire Suppression System

Top choice for commercial cooking fire protection

- ▮ Cools grease and surrounding cooking surfaces
- ▮ Rapid flame knockdown
- ▮ Helps prevent reflash
- ▮ Color-coded, fusible-link detectors
- ▮ Aesthetic design complements kitchen decor
- ▮ Five-year limited warranty
- ▮ Non-corrosive agent
- ▮ UL/ULC listed and CE marked

Two design options available

- ▮ Customized appliance-specific design
- ▮ Overlapping “suppression zone” coverage

Today’s high-temperature, high-efficiency cooking appliances, plus the use of hotter burning vegetable oils, poses a greater fire suppression challenge than in the past.

ANSUL • R102- Restaurant Fire Suppression Systems meet the challenge and are the top choice of food service kitchens worldwide.

### Knock Down Kitchen Fires Fast

The R102- system incorporates a flexible design with an extremely effective ANSULEX Low pH Liquid Agent that quickly knocks down flames and cools hot surfaces while generating a tough vapor-securng blanket that helps prevent reflash.

The R102- system is designed to protect cooking equipment such as various types of fryers, griddles, range tops, broilers, char-broilers and woks. It also detects and suppresses fire in ventilating equipment including hoods, ducts, plenums and auxiliary grease extraction devices.

### Two Options for Flexible Protection

The appliance-specific design is one of the two protection options available with the R102- restaurant fire suppression system. The most efficient fire protection is accomplished when nozzles are selected and aimed at specific hazard areas on each appliance. This method typically provides the most economical use of liquid agent, reducing the size or quantity of storage tanks and associated hardware.

Overlapping appliance protection is flexible and simple. Nozzles are arranged in a straight line, providing overlapping agent discharge patterns where appliances can be protected, even if they are replaced or rearranged under the hood.



# Sigma XT

## Extinguishant Control Panel



**MODEL NUMBERS**  
K11031M2, K11031F2

**FirePro.**

“The FirePro complete system solutions, bespoke service and superior quality provide a measurable advantage.”



**FirePro.** Product Catalogue





**CAME**  
AUTOMATIC GATES

Came Products Series

### CAME Barrier System



G2500, G40000 & G5600



G8000



G12000

### CAME Sliding Gate System



BX 400-800kg



bk 1200-2200kg



bk 3500kg

### CAME Swing Gate System



ATI 3000-5024



Ferni F1000-F1100



Frog-A, Frog-AV & Frog-A24



## Benefits

- // Colourless, odourless, non-contaminating gaseous fire protection
- // Designed to protect critical assets and processes without consequential damage
- // Safe to use in occupied areas
- // Tried and tested through thousands of installations around the world
- // Quality & technical/ service support

## Applications

- // Computer suites and data centres
- // Offshore oil/gas exploration and production facilities
- // Telecommunications centres
- // Power generation
- // Marine
- // Museums and archives
- // Data storage



**Fast, effective fire protection for critical assets & processes**

**Full list of international approvals**

**Tried & trusted technology**

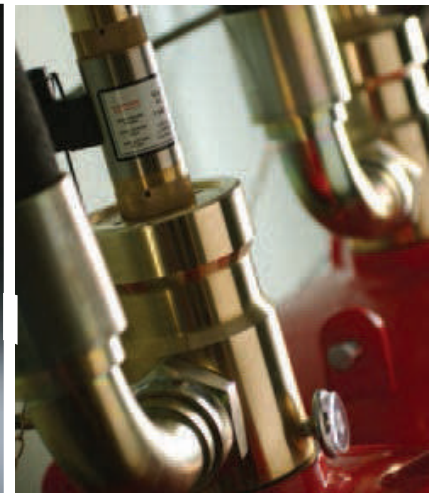
**Clean & safe solutions**

# FM-200<sup>®</sup>

Proven in thousands  
of successful  
installations worldwide

## Protecting your most valuable assets

Extensively tested, FM-200 systems are proven safe for use in occupied areas. They are designed using bespoke software, which accurately calculates the amount of FM-200 required for the protected space. The target concentration of FM-200 in an identified protected volume is matched to international standards, which themselves are the result of extensive and repeated fire tests, to match design to fire protection performance.



**tyco**

# COLOR VIDEO DOOR PHONE

## CDV-71BQ/BQS



HI-TECH COLOR TFT LCD 7" MONITOR  
CONNECTABLE WITH 4 CAMERAS, 2 MONITORS  
& HANDSET, WITH BUILT-IN MEMORY 68  
IMAGES

HI-TECH COLOR TFT LCD 7" MONITOR  
CONNECTABLE WITH 4 CAMERAS, HANDSET  
AND WIRELESS DUCT PHONE, WITH BUILT-  
IN MEMORY 128 IMAGES OPTIONAL, AUDIO  
WIRELESS DUCT PHONE CONNECTABLE  
WITH MONITOR MODEL CDV-72BE

## CDV-72BE/CDT180



## CDV-73BE



HI-TECH COLOR TFT LCD 7" MONITOR  
CONNECTABLE WITH 2 DOOR CAMERAS,  
2 MONITORS AND 2 HANDSETS

## CDV-43Q



## CDV-43N



4.3" WIDE TFT COLOR  
LCD (LED BACK LIGHT)  
MONITOR, PAL/NTSC  
CONVERTIBLE, CONNE-  
CTABLE WITH 2 DOOR  
CAMERAS, 2 MONITORS  
AND 2 HANDSETS.

4.3" WIDE TFT COLOR LCD (LED  
BACK LIGHT) HAND-FREE MONITOR,  
PAL/NTSC CONVERTIBLE, CONNE-  
CTABLE WITH 2 DOOR CAMERAS, 2  
MONITORS AND 2 HANDSETS

## CDV70 A/ 71AM, CDV-70P/PM & CDV-50 A/51AM



## CDV-50 A / 51 AM



5"/7" COLOR TFT LCD MONITOR CONNECTABLE WITH  
2 CAMERAS, 2 MONITORS AND 2 INTERPHONES  
OPTIONAL:  
BUILT-IN MEMORY (128 CUTS)



# COLOR VIDEO DOOR PHONE

## CDV-35A/DRC-4MC



COLOR VIDEO DOOR PHONE KIT INCLUDING COLOR DOOR CAMERA AND 3.5" COLOR TFT LCD MONITOR CONNECTABLE WITH 2 CAMERA, 2 MONITOR & HANDSET

## CDV-35H/DRC-4MC

COLOR VIDEO DOOR PHONE KIT INCLUDES COLOR DOOR CAMERA AND 3.5" COLOR TFT LCD MONITOR W/SPEAKER CONNECTABLE WITH 2 CAMERA, 2 MONITORS & HANDSET



## CDV-50N/DRC-4MC



COLOR VIDEO DOOR PHONE KIT INCLUDES COLOR DOOR CAMERA AND 5" COLOR TFT LCD MONITOR CONNECTABLE WITH 2 CAMERAS, 2 MONITORS AND 2 INTERPHONES

## CDV-70K/DRC-4MC

COLOR VIDEO DOOR PHONE KIT INCLUDES COLOR DOOR CAMERA AND 7" COLOR TFT LCD MONITOR CONNECTABLE WITH 2 CAMERAS, 2 MONITORS AND 2 INTERPHONES.



## CDV-4CAN



1/3" COLOR CCD DOOR CAMERA W/ALUMINUM CASE 1 APARTMENT

## DRC-4CPN2 DRC-4CGN



1/3" Color CCD door camera (pin hole) 1 apartment

## DRC-4DC



1/3" Color CCD door camera water proof & external impact resistant

## CDV-50 A / 51 AM



1/3" Color CCD door camera w/aluminum case, PAL/NTSC Convertible, 2, 4, 6, 8, 10, 12, 14, 16 Apartment.

## FIRE DOOR AND FRAMES



**Door Frames for use as a component in fire door assemblies that meet the requirements of UL10C:**

Three sided steel frame with or without transoms (single swing or pair).

**Door Frames for use as a component in fire door assemblies that meet the requirements of UL10B (neutral pressure):**

Three sided frames with or without transom (single swing or pair).

### FIRE DOOR AND FIRE WINDOW FRAMES CERTIFIED FOR CANADA

**Door frames:** Welded three sided single frames for use in 3/4, 1-1/2, 3 hr locations. Maximum size of frame: 1200 mm in width and 2261 mm in height.

**Door frames:**

Welded three sided pair type frames for use in 3/4, 1-1/2, 3 hr locations. Maximum frame size is 2313 mm in width and 2269 mm in height.



### SWINGING-TYPE FIRE DOORS

Max Rating	Opening Type
2 Hr	Single or Pair With Astragal, Single Point Lock/ Flush Bolts, Single Rim/ Mortise Fire Exit Hardware, Door with Automatic Louver, Max 100 in <sup>2</sup> Glazing
3 Hr	Single with Single Point Lock/Rim, Mortise Fire Exit Hardware 450°F Temperature Rise
1Hr	Single with Single Point Lock/Rim, Mortise Fire Exit Hardware 450°F Temp Rise DoorPair with Astragal Single Point Lock, Mortise Fire Exit Hardware, Flush Bolts / Vertical Rod Fire Exit Hardware 450°F Temp Rise Door

## GRANDING FINGER PRINT



The access control system, MA300, is special for outdoor use fingerprint access control product, combined such as fingerprint recognition algorithm, optical sensors, embedded design technology, and software application, etc.. MA300 is IP based protect, waterproof and dust proof.

### FEATURES :

- ❖ Composite algorithm system with high speed operating
- ❖ Standalone or network environment
- ❖ Built-in serial and Ethernet ports
- ❖ Tamper-proofs switch and alarm outputs
- ❖ Request-to-exit and alarm outputs
- ❖ Saves data during power outage
- ❖ With strong seal appearance, anti-dust, IP65 protection

### SPECIFICATIONS :

Display/Speaker	Language
LCD Display: N/A	Multi Language, English, French, Spanish, Arabic,
Speaker: Voice Prompt (language can be selected)	etc., for more than 40 languages can be selected
Technical Specifications Capacity	Environment
Fingerprint capacity: 1,000; ID Card: 10,000	Operation temperature: 0°C ~ 45°C
Log capacity: 30,000	Operation humidity: 20% ~ 80%
Verification/Identification	Verification/Identification
Verification speed(1:1): ≤0.5s	FRR: ≤0.01%
Identification speed(1:N): ≤1s	FAR: ≤0.0001%
Power Supply	Machine Size
Power: 110/220VAC ~ 12VDC (PS-3A is optional item)	73(L)*148(W)*35(H)mm
Communication	Attendance status
TCP/IP, RS232/485, USB/Host, Wiegand In, Wiegand Out	N/A
Standand Function	Customize Function
IP65, outdoor waterproof fingerprint access control built-in ID card; Audio prompt for enrollment and deletion of the users, audio-visual indications for acceptance and rejection of valid/invalid fingers; Tamper-proofs switch and alarm outputs, request-to-exit and alarm contacts	Mifare reader

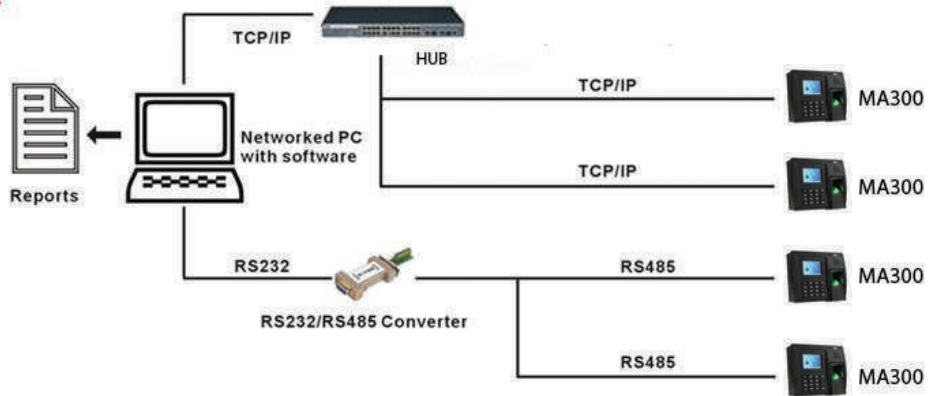
# GRANDING FINGER PRINT



## Standalone



## Network





الشركة السعودية للكهرباء  
Saudi Electricity Company



Ministry of Health



المراكز العربية  
Arabian Centres



NARCISSUS  
HOTEL AND RESIDENCE  
RIYADH



بودل  
BOUDL  
HOTELS & RESORTS



aloft  
HOTELS



موبايلي  
mobily



KFB  
Holding Group  
مجموعة خالد فهد العيزر القابضة



جامعة الأمير سلطان  
Prince Sultan University



المراعي  
Almarai



Fairmont  
HOTELS & RESORTS



SFDA  
الهيئة العامة للغذاء والدواء  
Saudi Food & Drug Authority





## **SAFETY & SECURITY SYSTEMS**

[www.safetechsa.com](http://www.safetechsa.com)

[safetech@safetechsa.com](mailto:safetech@safetechsa.com)

Kingdom Of Saudi Arabia

Riyadh

Tel. :+966 114726422  
Fax :+966 114724922

Dammam

Tel. :  
Fax :

Al Qassim

Tel. :+966 163691320  
Fax :+966 163691320